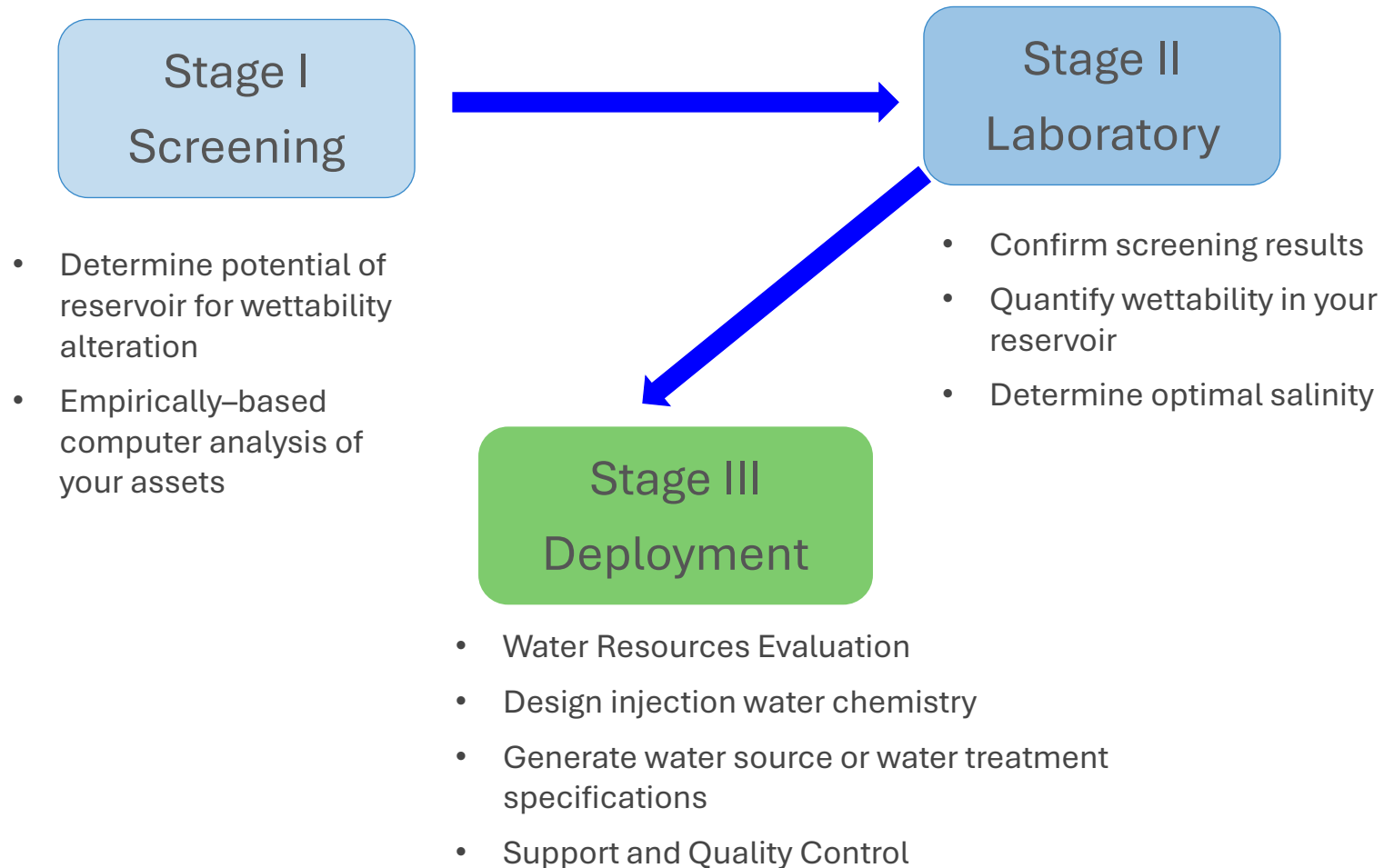




- Engineered Salinity is Applied Science
 - Field Proven
 - Increase Hydrocarbon Recovery
-
- Our results are guaranteed; we don't make money unless you make money.

ESal™ Technical Workflow

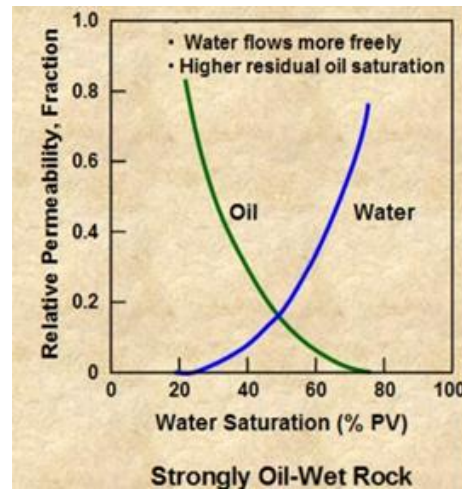
Low risk and enhance outcomes with each step



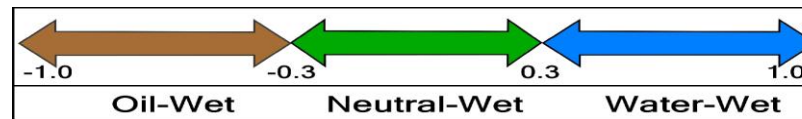
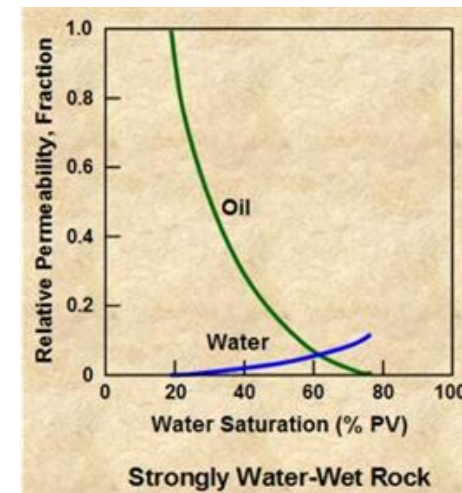
HOW DOES IT WORK?

- Wettability (relative permeability) controls hydrocarbon recovery.
- Better Wettability = **Improved sweep efficiency**.

Hydrocarbon flows easily



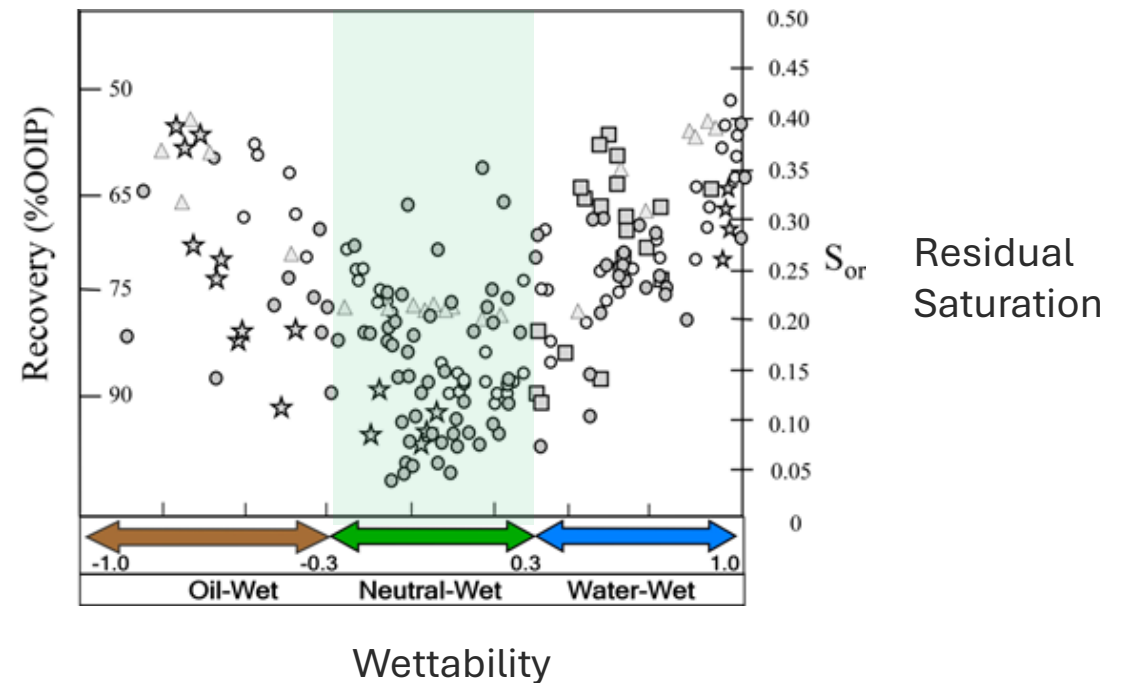
Water flows easily



Confidential

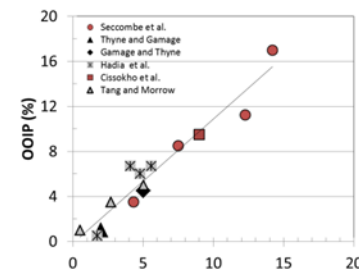
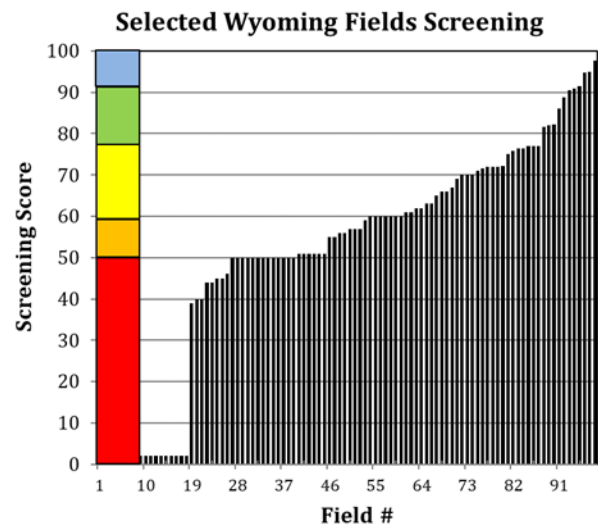
WHAT SHOULD YOU KNOW ABOUT WETTABILITY?

- The **most hydrocarbon recovery** is at neutral wettability.
- Highest hydrocarbon and lowest water production
- You can **improve wettability** with water chemistry.
- The method is practical and predictable.

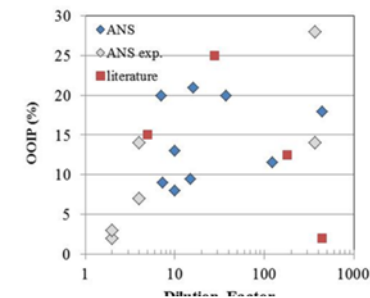




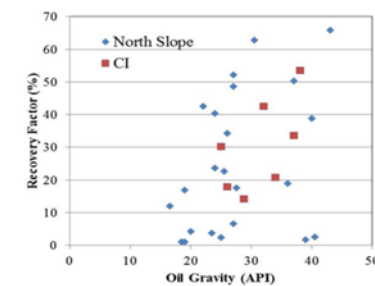
Empirically-based Screening Tool



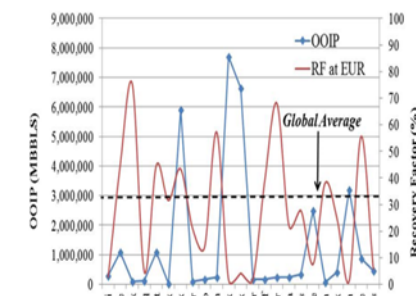
Rock



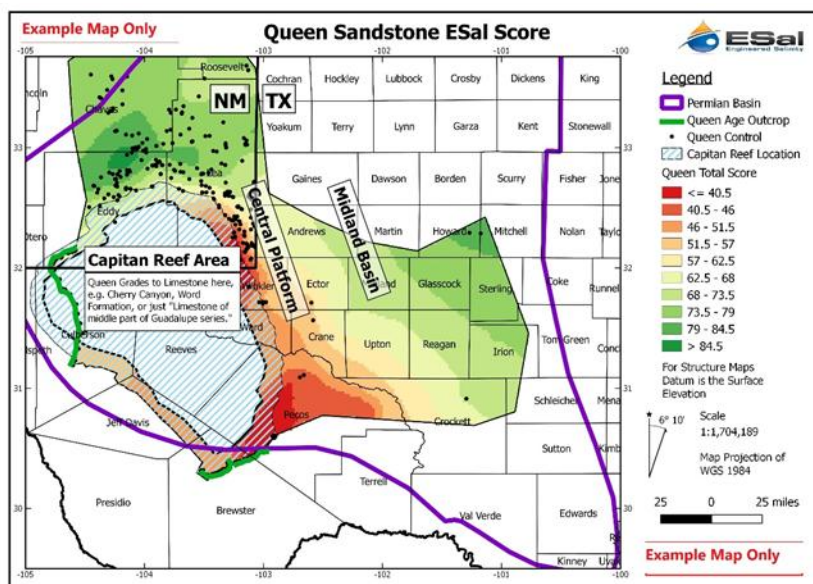
Water



Oil

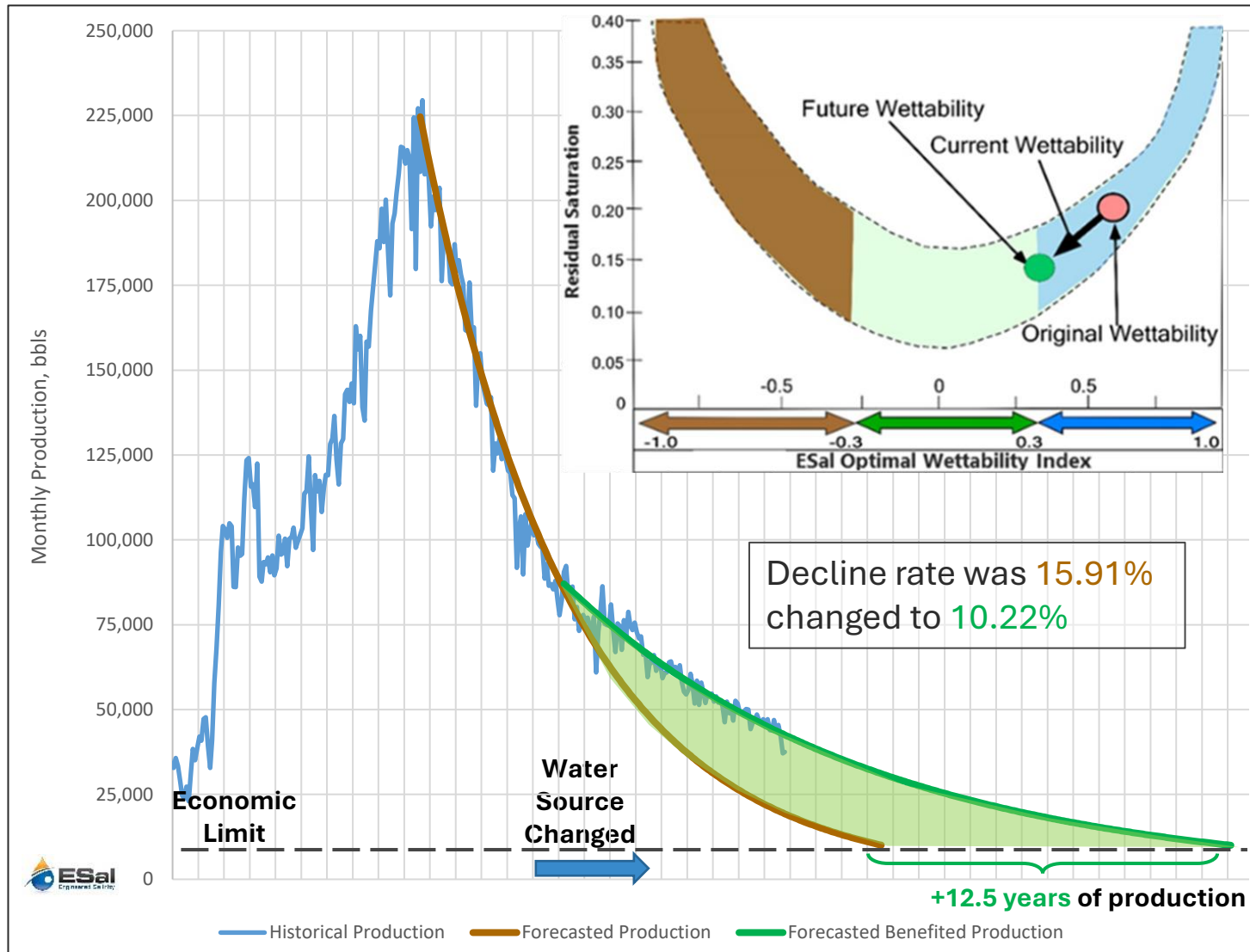


Field



Excellent	92-100
Good	78-91
Average	60-77
Marginal	50-59
Not recommended	<50

Case Histories - Benefits to Clients

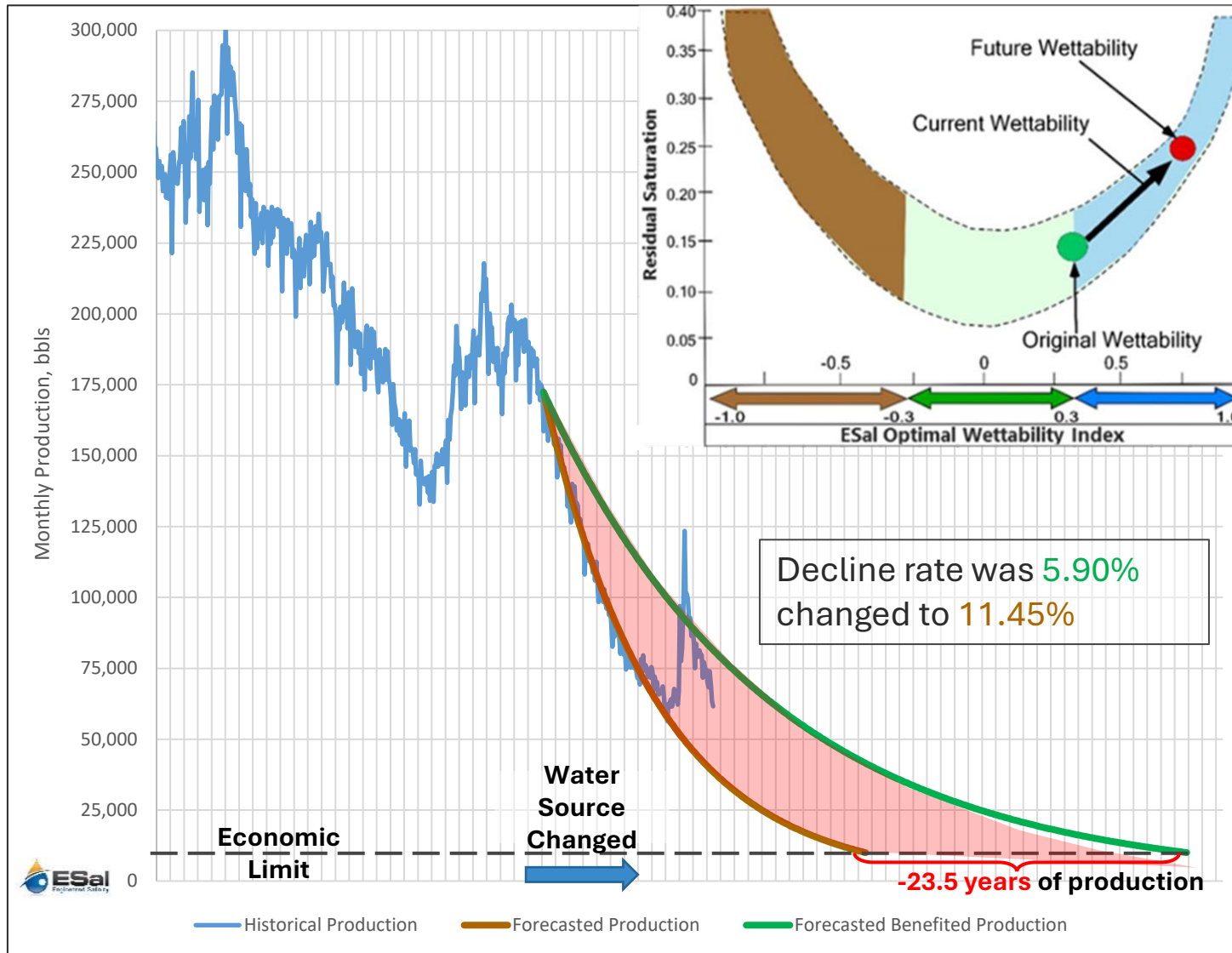


← **ESal Testing**
Predict Recovery with
RightWater® Technology.

Better Wettability:

- Extend property life = **12.5 years**
- Recover **1,900,000** more barrels (to date)
- Additional EUR: **4,900,000 barrels**
- Increased property value by **\$50 million @ \$40/bbl**
- **\$1.62 per incremental barrel (CAPEX+OPEX)**

Case Histories – Avoid Wettability Formation Damage



ESaI Testing
Avoid **Wettability Damage** with
RightWater® technology.

Wettability Damage

- Reduced property life = **23.5 years**
- **5,000,000** barrels left behind to date
- Total loss = **16,000,000** barrels

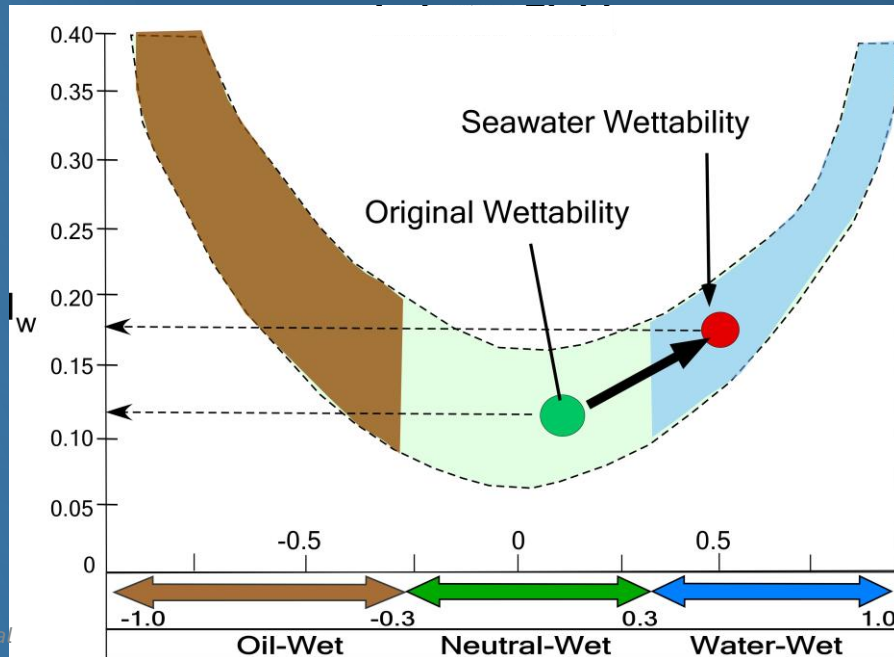
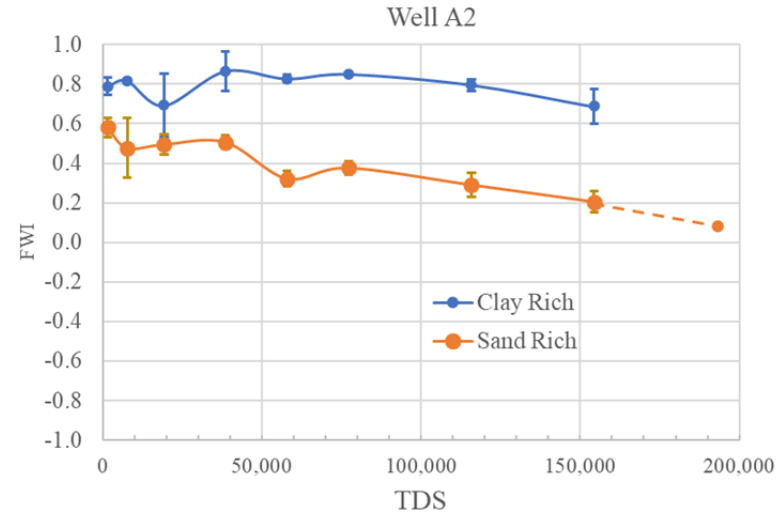
Example

GOM Field

Waterflooding with RightWater® will provide an additional 10–15% recovery (41 to 66 MM bbl).



Translate lab tests
into field solutions



Confidential

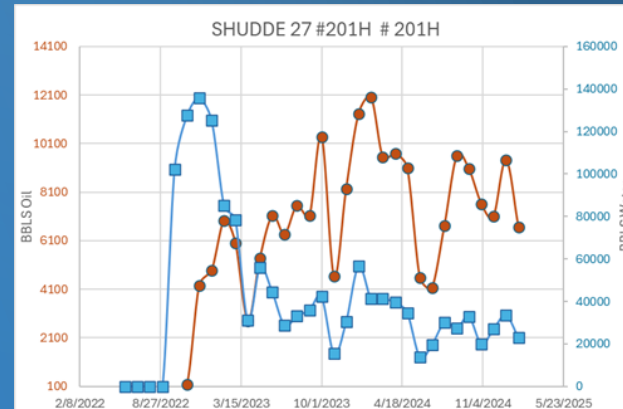
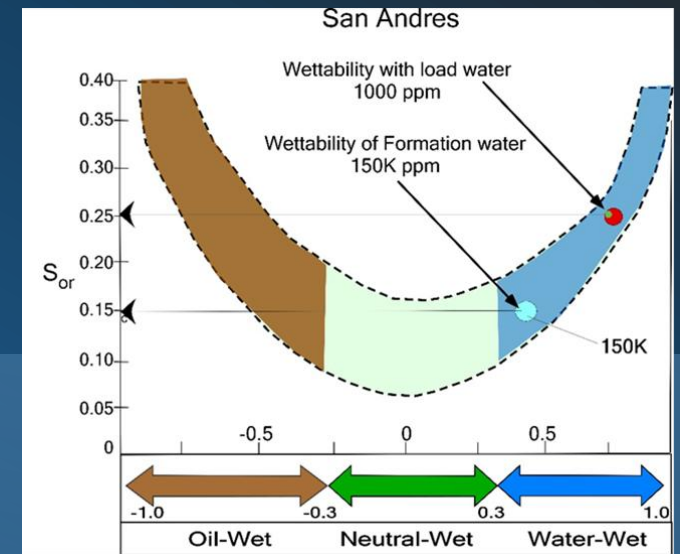
Example

NM field

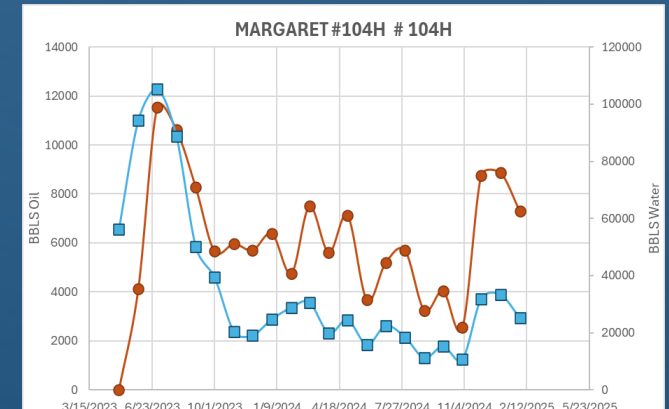
Improve oil recovery by
20%, lower water cut,
reuse produced water



Translate lab tests
into field solutions



$A_v W/O = 8.9$
 $A_v IP90 = 14,780 \text{ bbl}$

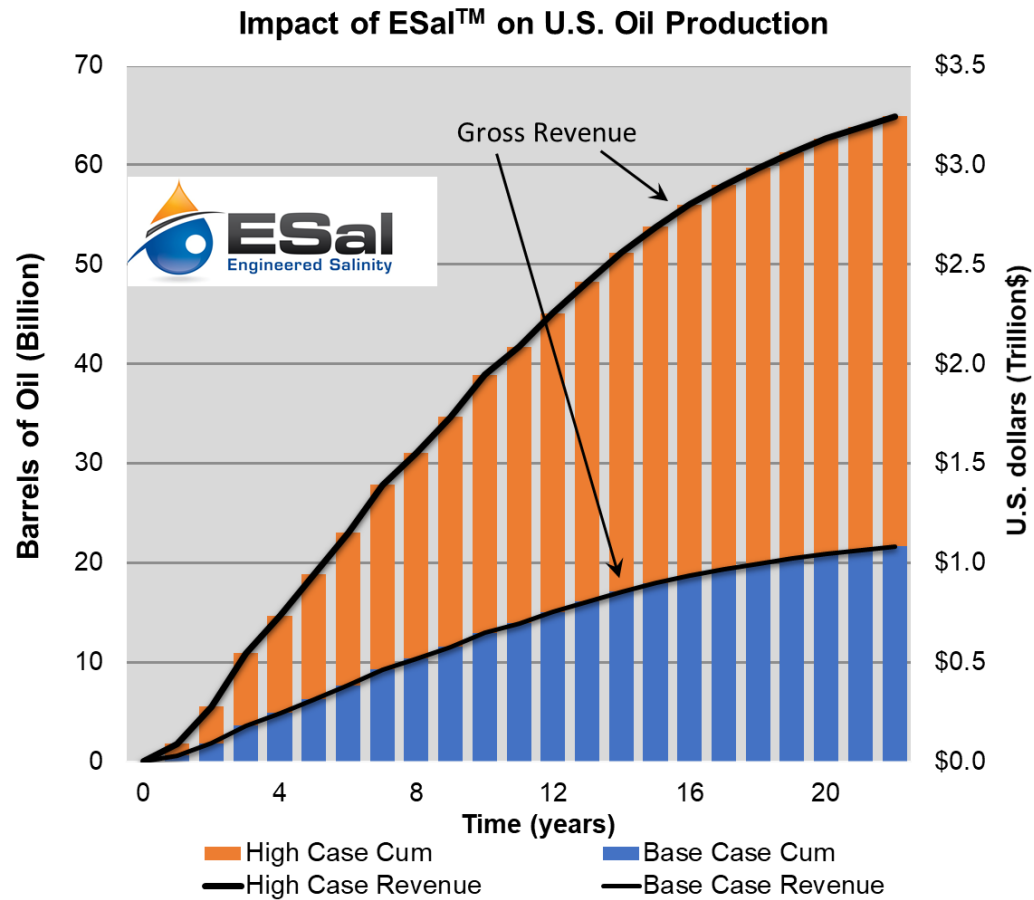


$A_v W/O = 5.6$
 $AV IP90 = 19,470 \text{ bbl}$

Confidential
Before

After

Ultimate US Conventional Market





- Engineered Salinity is Science that works for you
 - Field Proven
 -
 - Increased Hydrocarbon Recovery
-
- Our results are guaranteed; we don't make money unless you make money.